

**77. SL****SL1, SLV****SL1.50, 0.9 - 1.5 kW, SLV.65, 0.9 - 1.5 kW****Clamp**

Pos.	Kit No	96592050
Description		
92	Clamp complete	1

**Impeller**

Pos.	Description	SL1.50			SLV.65		
		0.9 kW	1.1 kW	1.5 kW	0.9 kW	1.1 kW	1.5 kW
Kit No		96115096	96115097	96115098	96115110	96115099	96115100
9a	Key 5 x 5 x 12	1	1	1	1	1	1
49	Impeller	1	1	1	1	1	1
66	Lock washer	1	1	1	1	1	1
188a	Screw M8 x 25	1	1	1	1	1	1

**SmartSeal**

Pos.	Kit No	96575022	96659160	96575023	96659161
		NBR	FKM	NBR	FKM
Description		DN 65		DN 65/80	
-	SmartSeal for guide shoe	1	1	1	1

**O-ring**

Pos.	Kit No	Description	96115107	96646049
			NBR	FKM
26a	O-ring	32 x 4	1	1
37	O-ring	164 x 3	1	1
37a	O-ring	114 x 3	2	2
37b	O-ring	86 x 4	1	1
102	O-ring	19 x 1.5	2	2
107	O-ring	47 x 3	1	1
159	O-ring	32 x 2	1	1
185	O-ring	31 x 2	1	1
187	O-ring	28 x 2	1	1
194	Sealing washer		2	2
198	O-ring	34.2 x 3	1	1
-	O-ring	135 x 4 (not used)	1	1

**Pin housing**

Pos.	Description	Kit No
177	Pin housing with 7 poles	96778908

**Plug for power connection for SL1 and SLV**

Pos.	Description	Type	Connection	Kit No
176	Plug for power connection	A	1-phase	96747258
		A	Y	96747254
		A	D	96747257

**Shaft seal**

Pos.	Kit No	Description	96106536	96645161
			BQQP	BQQV
9a	Key		1	1
66	Lock washer		1	1
105	Shaft seal cartridge		1	1
188a	Screw M8 x 25		1	1
194	Sealing washer		2	2

**Upper guide rail holder**

Pos.	Kit No	Description	96592037	96829357
			DN 65/DN 80	DN 65/DN 80
-	Upper guide rail holder		1	1
		Before 1044 cast iron		After 1044 St. steel

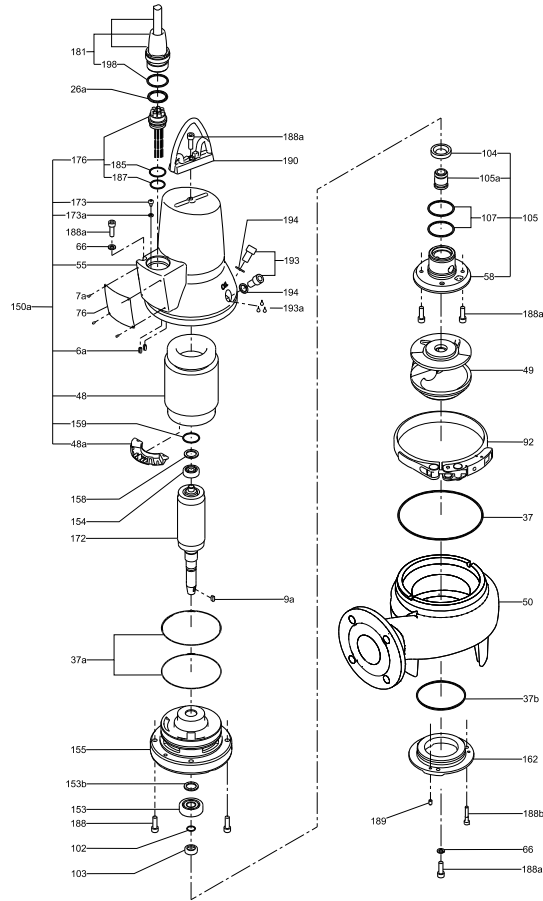
**Lifting bracket**

Pos.	Description	Kit No	96690420
		Frame	1.1-1.5 kW / 1.5-2 HP
188a	Screw		2
190	Lifting bracket		1

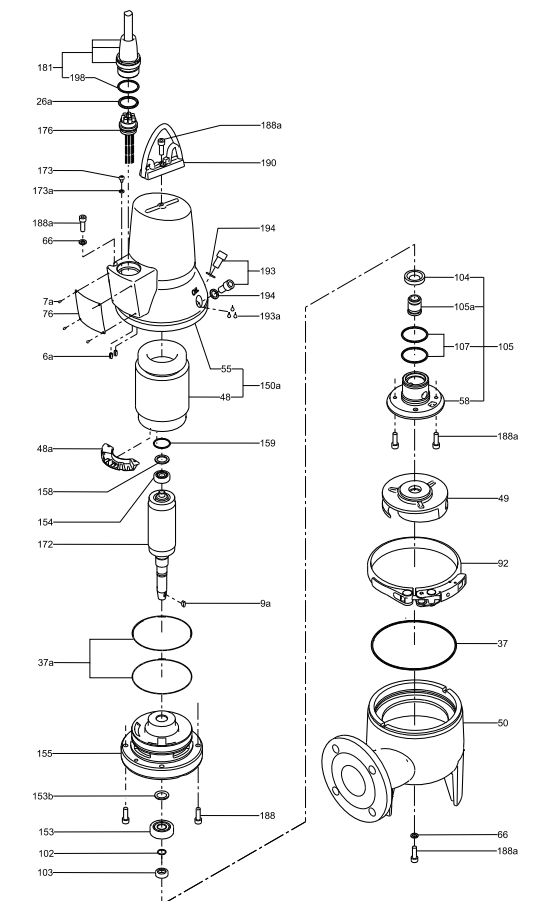
**Bearing**

Pos.	Description	Kit No	98682345
		Frame	0.9-1.5 kW
153	Bearing		1
154	Bearing		1

SL1, 0.9 - 1.5 kW



SLV, 0.9 - 1.5 kW



TM02 7363 0904

TM02 7364 0904

**SL1.50, SL1.80, SL1.100 from 2.2 kW/3 HP,  
SLV.65, SLV.80, SLV.100 from 2.2 kW/3 HP****Impeller-fixing parts**

Pos.	Description	2-pole	2.2 - 4.0 kW / 3.0 - 5.5 hp	5.5 - 11.0 kW / 4.0 - 15.0 hp
		4-pole	1.1 - 2.2 kW / 1.5 - 3.0 hp	3.0 - 7.5 kW / 4.0 - 10.0 hp
		Kit No	96102365	96102366
9a	Key	1	1	1
66	Washer	1	1	1
157	Corrugated spring	1	1	1
188a	Screw	1	1	1

**Single-channel Impeller**

Pos.	Description	Free passage	80	50	80	50	80	50	80
		2-pole	2.2			3.0			4.0
		4-pole	1.5		2.2		3.0		5.5
		Cast iron	96091222	96091219	96091223	96091220	96091224	96091221	96091226
49	Impeller	1	1	1	1	1	1	1	1
49c	Wear ring for impeller	1	1	1	1	1	1	1	1

Pos.	Description	Free passage	100	80	100
		2-pole			
		4-pole	5.5	7.5	7.5
		Cast iron	96091229	96091227	96091230
49	Impeller	1	1	1	1
49c	Wear ring for impeller	1	1	1	1

**SuperVortex impeller**

Pos.	Description	Free passage	65	80	65	80	100	65.40/80.40	80.40
		2-pole	2.2		3.0	3.0		4.0	
		4-pole	2.2				3.0		4
		Cast iron	96886437	96812794	96886439	96886439	96886453	96886441	-
Stainless steel	-	97759200	-	-	97759206	-	97759201		
49	Impeller	1	1	1	1	1	1	1	

Pos.	Description	Free passage	100	100	80	100	80	80	
		2-pole							
		4-pole	4.0	5.5	6.0	7.5	7.5	9.2	11
		Cast iron	96886456	96882380	96812823	96812827	96882475	96812831	96812654
Stainless steel	97759207	97759208	97759202	97759203	97759209	97759204	97759205		
49	Impeller	1	1	1	1	1	1	1	

**S-tube impeller**

Please check Grundfos Product Center.

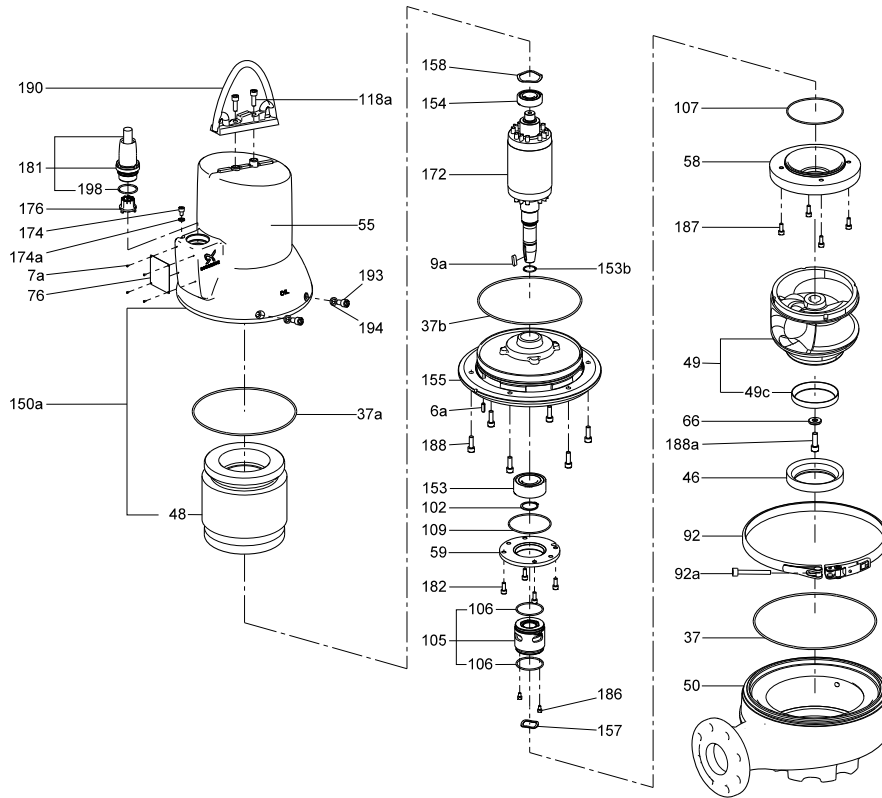
**Tube impeller "Generation A"**

Pos.	Description	SL1 100.75.4
		97783819
49	Impeller 50Hz SE1.100.75.4, tube catph.	1
49C	Wear ring for impeller SE1.100	1
58	Cover for oil chamber D, D235, catph	1

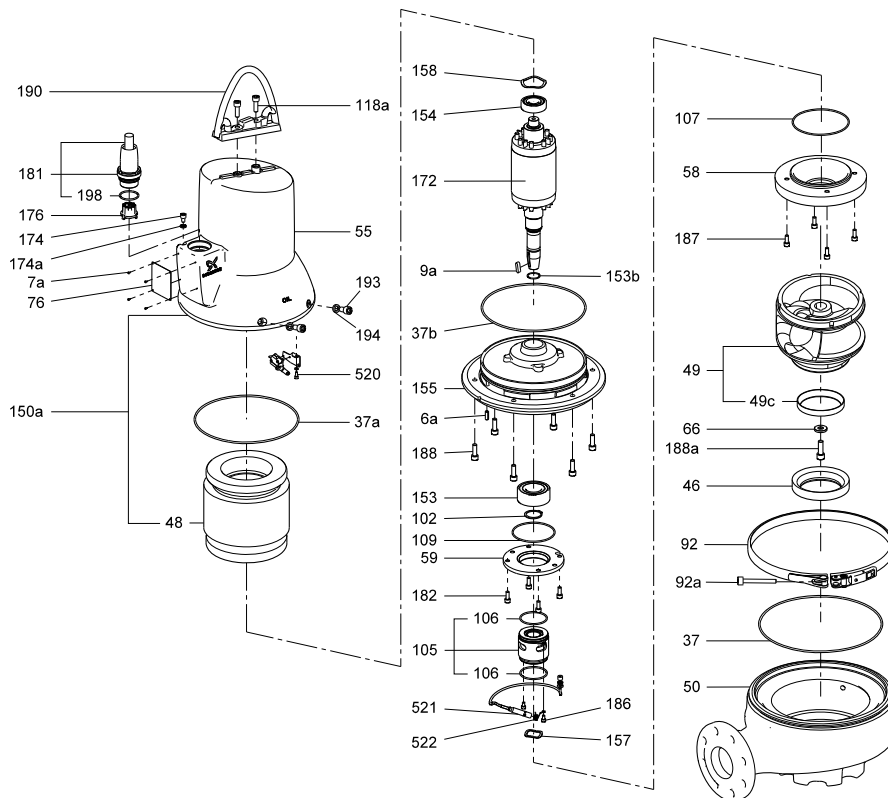
**Wear ring (SL1)**

Please check Grundfos Product Center.SLV without sensor

SL1 without sensor



SL1 with sensors



TM04 2777 2605

TM04 2778 2908

**SL1.50, SL1.80, SL1.100 from 2.2 kW/3 HP,  
SLV.65, SLV.80, SLV.100 from 2.2 kW/3 HP****Moisture switch**

Pos.	Description	Kit No
		96817995
	Moisture switch calibrated	1
	Screw	2
	Nut	2
520	Connector	3
	Connector	3
	Screw combined slot torx straight	2
	Guard for moisture switch	1

**O-ring**

Pos.	Description	2-pole	2.2 - 3.0 kW / 1.5 - 3 HP	4.0 kW / 5.5 HP	6.0 - 7.5 kW / 8-10 HP	9.2 - 11 kW / 12.5 - 15 HP
		4-pole NBR, Kit No	1.1 - 2.2 kW / 1.5 - 3 HP 96873520	- 96873521	3.0 - 5.5 kW / 4 - 7.5 HP 96873542	7.5 kW / 10 HP 96873543
37	O-ring		1	1	1	1
37a	O-ring		1	1	1	1
37b	O-ring		1	1	1	1
102	O-ring		1	1	1	1
106	O-ring		2	2	2	2
107	O-ring		1	1	1	1
109	O-ring		1	1	1	1
194	Sealing washer		2	2	2	2
198	O-ring		1	1	1	1

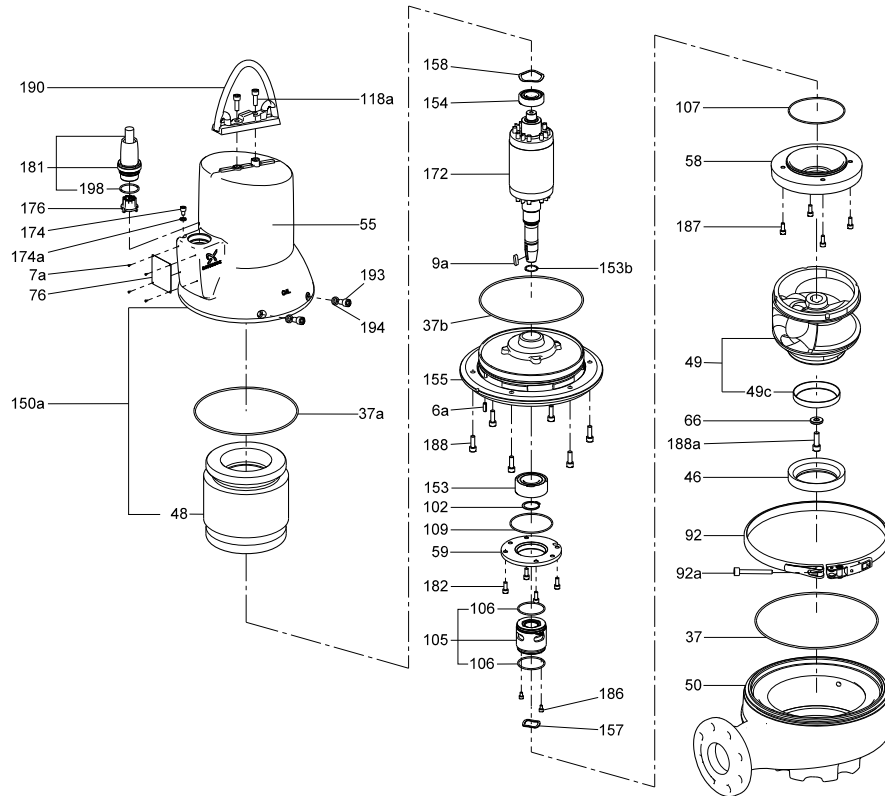
**Shaft seal**

Pos.	Description	2-pole	2.2 - 4.0 kW / 3 - 5.5 HP	6.0 - 11 kW / 8 - 15 HP
		4-pole	1.1 - 2.2 kW / 1.5 - 3.0 HP	3.0 - 7.5 kW / 4 - 10 HP
		Rubber type	NBR	NBR
Kit No		96102360	96102361	
105	Shaft seal cartridge		1	1
107	O-ring	110 x 3	1	1
		134.5 x 3	1	1
		160 x 3	1	1
153b	O-ring	17.0 x 2.4	1	1
		28 x 2	1	1
157	Corrugated spring		1	1

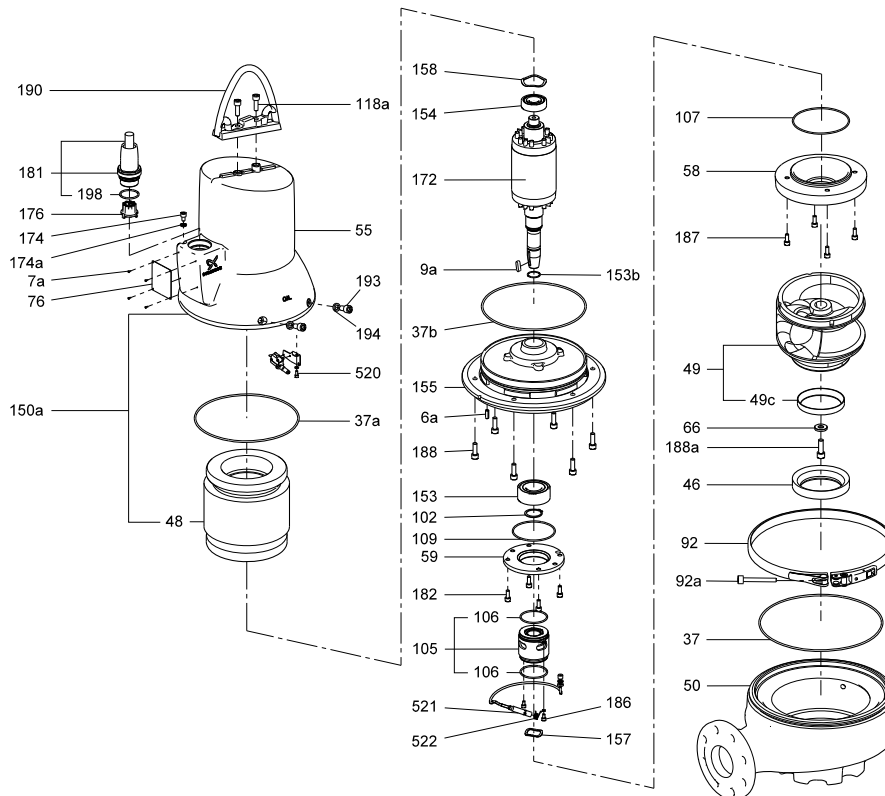
**Wear rings (SL1)**

Pos.	Description	Free passage	Ø50/2"	Ø80/3"	Ø100/4"
		Rubber type	NBR	NBR	NBR
		Kit No	96102362	96102363	96102364
46	Seal ring		1	1	1
49c	Wear ring		1	1	1

SL1 without sensor



SL1 with sensors



TM04 2777 2605

TM04 2778 2908

**Bearing**

Pos.	Description	2-pole	2.2 - 3.0 kW / 3 - 4 HP	4.0 - 7.5 kW / 5.5 - 10 HP	9.2 - 11 kW / 12.5 - 15 HP
		4-pole	1.1 - 2.2 kW / 1.5 - 3 HP	3.0 - 5.5 kW / 4 - 7.5 HP	7.5 kW / 10 HP
		Kit No	96690703	96904928	96690705
153	Bearing D-end	1	1	1	1
154	Bearing N-end	1	1	1	1

**Clamp**

Pos.	Description	2-pole	2.2 - 3.0 kW / 3 - 4 HP	4.0 - 7.5 kW / 5.5 - 10 HP	9.2 - 11 kW / 12.5 - 15 HP
		4-pole	1.1 - 2.2 kW / 1.5 - 3 HP	3.0 - 5.5 kW / 4 - 7.5 HP	7.5 kW / 10 HP
		Kit No	96592061	96592063	96592064
92	Clamp	1	1	1	1

**Guide shoe**

Description	Outlet	DN 80	DN 80/100	DN 100	DN 100/150	DN 150
	Rubber type	NBR	NBR	NBR	NBR	NBR
	Kit No	96592058	96611611	96592056	96611613	96592060
Guide shoe		1	1	1	1	1
SmartSeal		1	1	1	1	1

**Lifting bracket**

Pos.	Description	2-pole	2.2 - 4 kW / 3 - 5.5 HP	6 - 11 kW / 8 - 15 HP
		4-pole	1.1 - 4 kW / 1.5 - 5.5 HP	5.5 - 7.5 kW / 7.5 - 10 HP
		Kit No	96873469	96873519
190	Lifting bracket	1	1	1
188a	Screw	2	2	2

**SmartSeal for auto coupling**

Description	Outlet	DN 65	DN 65/80	DN 80	DN 80/100	DN 100	DN 100/150	DN 150
	Rubber type	NBR	NBR	NBR	NBR	NBR	NBR	NBR
	Kit No	96575022	96575023	96575024	96575025	96575027	96575028	96575029
SmartSeal		1	1	1	1	1	1	1

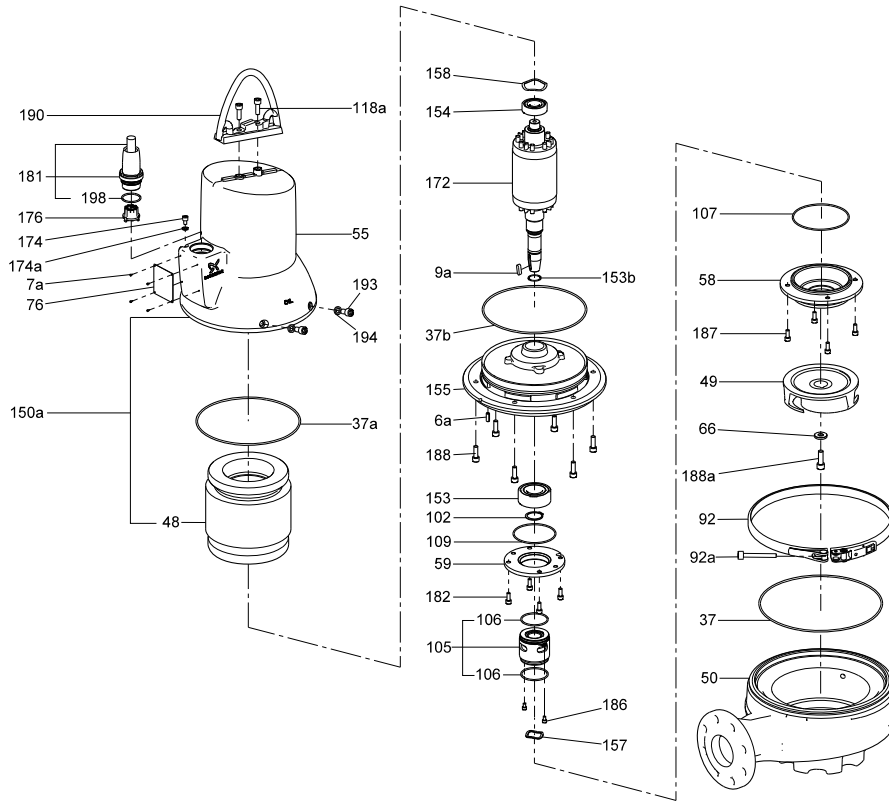
**Lifting bracket**

Pos.	Description	Kit No	96690428
		Frame	2.2 - 3 kW, 2-pole / 3-4 HP 1.5 - 2.2 kW, 4-pole / 2-3 HP
188a	Screw	2	2
190	Lifting bracket	1	1

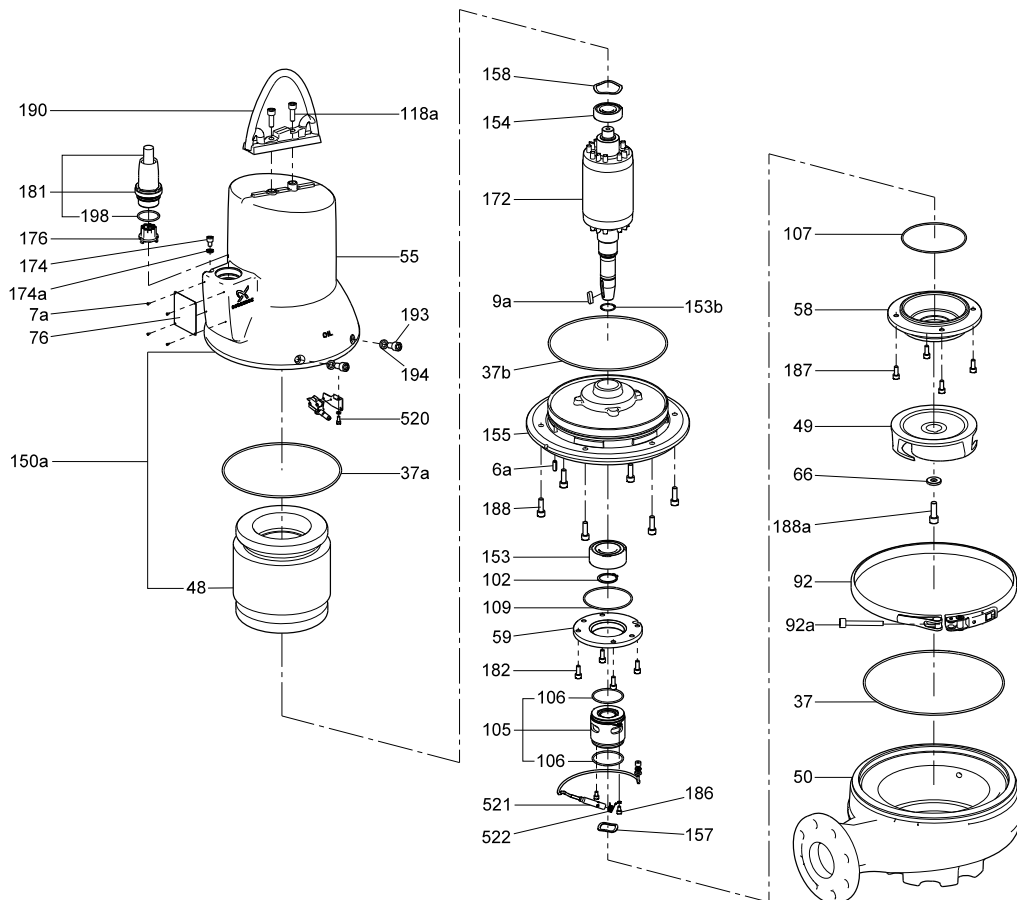
**Water-in-oil sensor**

Pos.	Description	Type	50 Hz	60 Hz
			ATEX-approved	FM-approved
		Kit No	96904929	97717977
	Disc spring		4	4
	Rubber bush		1	1
521	Washer for cable-entry		1	1
	Sensor holder		1	1
	Sensor unit complete		1	1

SLV without sensor



SLV with sensors



TM04 2779 2908

TM04 2780 2908



## Cable, 50 Hz

Pos.	Description/length	10 m	15 m	20 m	25 m	
181	Standard	96591649	96659473	96591660	96689953	
	2.2-3 kW, 2-pole / 3-4 HP	Standard D	-	-	-	
	1.5-2.2 kW, 4-pole / 2-3 HP	Ex	96689976	96689977	96689978	96689979
		Ex D	-	-	-	-
	Screened Ex	96102486	96689980	96102488	96102489	
	Standard	96689954	96689955	96689956	96689957	
	Standard D	96689958	96689959	96689970	96689971	
	6-11 kW, 2-pole / 8-15 HP, 2-pole	Ex	96102482	96102483	96102484	96102485
		Ex D	96102498	96102499	96102500	96102501
	3-7.5 kW, 4-pole / 4-10 HP, 4-pole	Screened Ex D	96102490	96102491	96102492	96102493
		Screened Ex Y	96769058	96769060	96769061	96769062

## Cable, 60 Hz

Pos.	Description/length	10 m / 33 ft	15 m / 49 ft	20 m / 66 ft	25 m / 82 ft	
181	7 x 1.5 mm <sup>2</sup> /AWG16 DOL					
	2.2-3 kW, 2-pole / 3-4 HP, 2-pole	Standard	97634728	97634909	97634910	97634911
		Ex	97634729	97634933	97634934	97634935
	1.5-2.2 kW, 4-pole / 2-3 HP, 4-pole	Screened Ex	97634730	97634957	97634958	97634959
		4 x 2.5 mm <sup>2</sup> /AWG14 + 3 x 1.5 mm <sup>2</sup> /AWG16 DOL				
	6-7.5 kW, 2-pole / 8-10 HP, 2-pole	Standard	97634902	97634921	97634922	97634923
		Ex	97634905	97634945	97634946	97634947
	3-5.5 kW, 4-pole / 4-7.5 HP, 4-pole	Screened Ex D	97634908	97634969	97634970	97634971
		Screened Ex Y	97634907	97634963	97634964	97634965
	7 x 2.5 mm <sup>2</sup> /AWG14 + 3 x 1.5 mm <sup>2</sup> /AWG16 SD					
	9.2-11 kW, 2-pole / 12-15 HP, 2-pole	Standard	97634903	97634927	97634928	97634929
		Ex	97634906	97634951	97634952	97634953
7.5 kW, 4-pole / 10 HP, 4-pole	Screened Ex D	97634908	97634969	97634970	97634971	
	Screened Ex Y	97634907	97634963	97634964	97634965	

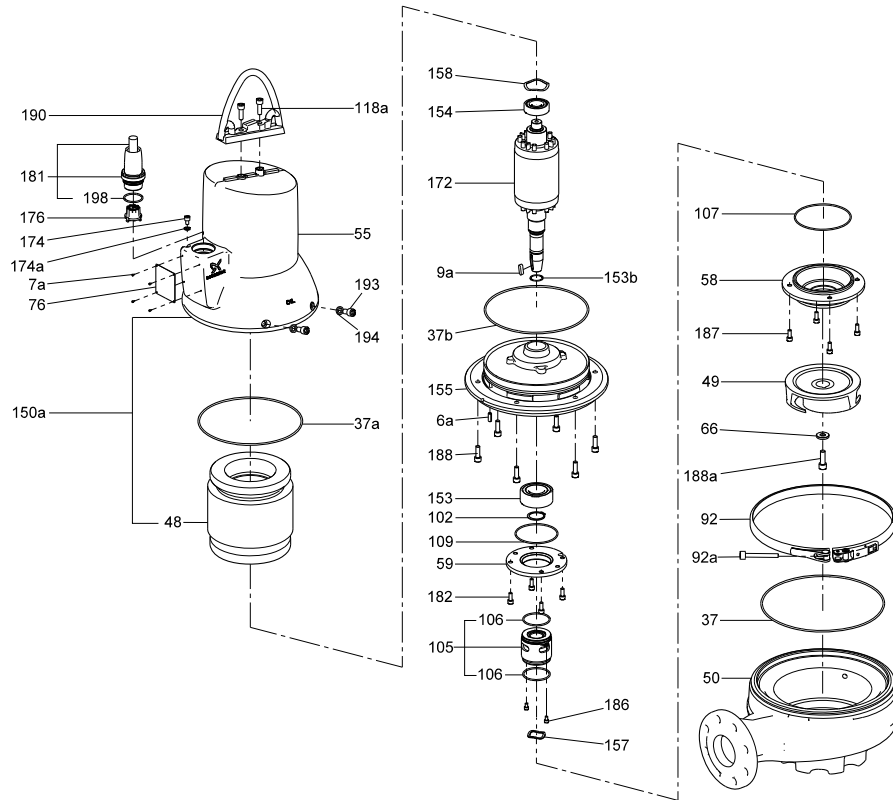
## Pin housing

Pos.	Description	Kit No
177	Pin housing with 7 poles	96778908
	Pin housing with 7 connector pins in 10-pole housing	97769613
	Pin housing with 10 poles	96778912

## Upper guide rail holder

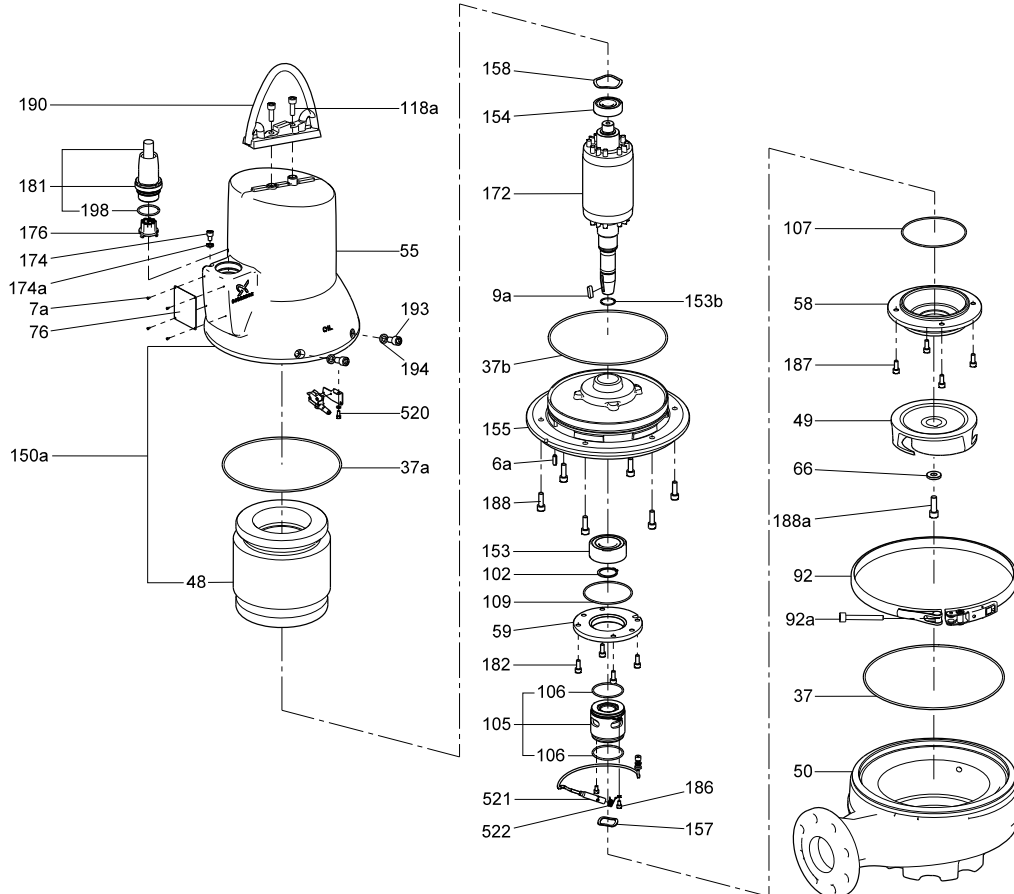
Pos.	Kit No	96592037	96829357	96592038	96829358
Description		DN 65/DN 80	DN 65/DN 80	DN 100/DN 150	DN 100/DN 150
-	Upper guide rail holder	1	1	1	1
		Before 1044 cast iron	After 1044 st.steel	Before 1044 cast iron	After 1044 st.steel

SLV without sensor



TM04 2779 2908

SLV with sensors



TM04 2780 2908

**SL 1, SLV AUTOADAPT****50 Hz****Bearing**

Pos.	Description	Type	0.9-1.5 kW
		Kit No	98682345
153	Bearing		1
154	Bearing		1

**Clamp**

Pos.	Kit No	96592050
	Description	
92	Clamp complete	1

**Lifting bracket**

Pos.	Description	Kit No	96984147
188a	Screw M8 x 25		1
190	Lifting bracket		1

**Impeller**

Pos.	Description	SL1.50			SLV.65		
		0.90 kW	1.1 kW	1.5 kW	0.9 kW	1.1 kW	1.5 kW
		Kit No	96115096	96115097	96115098	96115110	96115099
9a	Key 5 x 5 x 12	1	1	1	1	1	1
49	Impeller	1	1	1	1	1	1
66	Lock washer	1	1	1	1	1	1
188a	Screw M8 x 25	1	1	1	1	1	1

**O-ring**

Pos.	Description	0.9 - 1.5 kW	
		NBR	FKM
		Kit No	96115107
26a	O-ring	1	1
37	O-ring	1	1
37a	O-ring	2	2
102	O-ring	2	2
107	O-ring	1	1
159	O-ring	1	1
185	O-ring	1	1
187	O-ring	1	1
194	Sealing washer	2	2
198	O-ring	1	1
532	Silica gel	1	1

**SmartSeal**

Pos.	Kit No	96575022	96659160
	Description	NBR	FKM
	DN 65		
-	SmartSeal for guide shoe	1	1

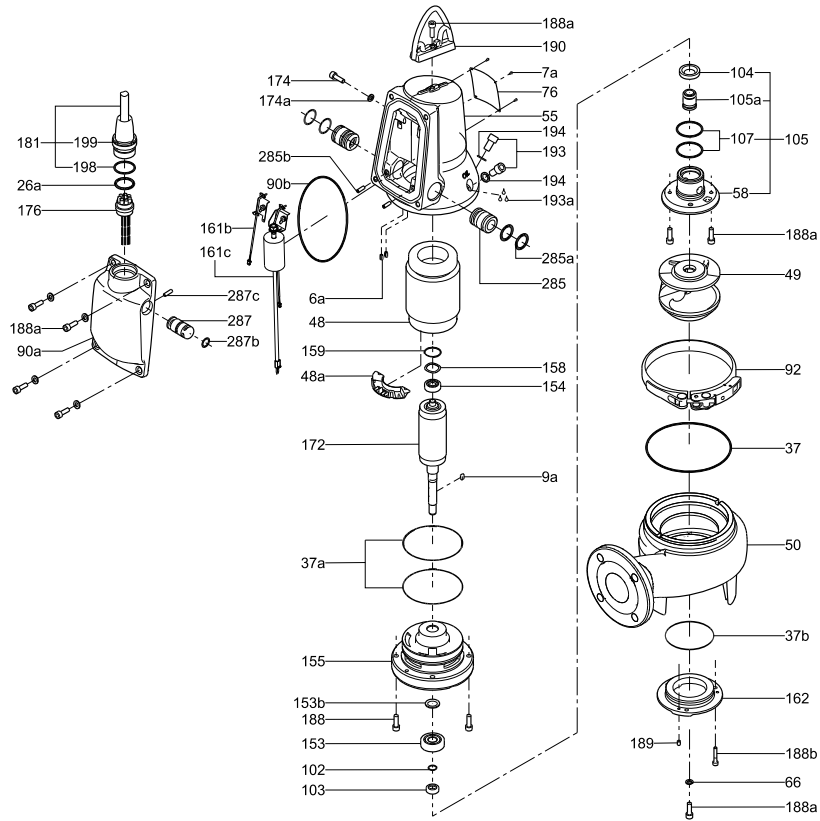
**Shaft seal**

Pos.	Kit No	96106536	96645161
	Description	BQQP	BQQV
	9a	Key	1
66	Lock washer	1	1
105	Shaft seal cartridge	1	1
188a	Screw M8 x 25	1	1
194	Sealing washer	2	2

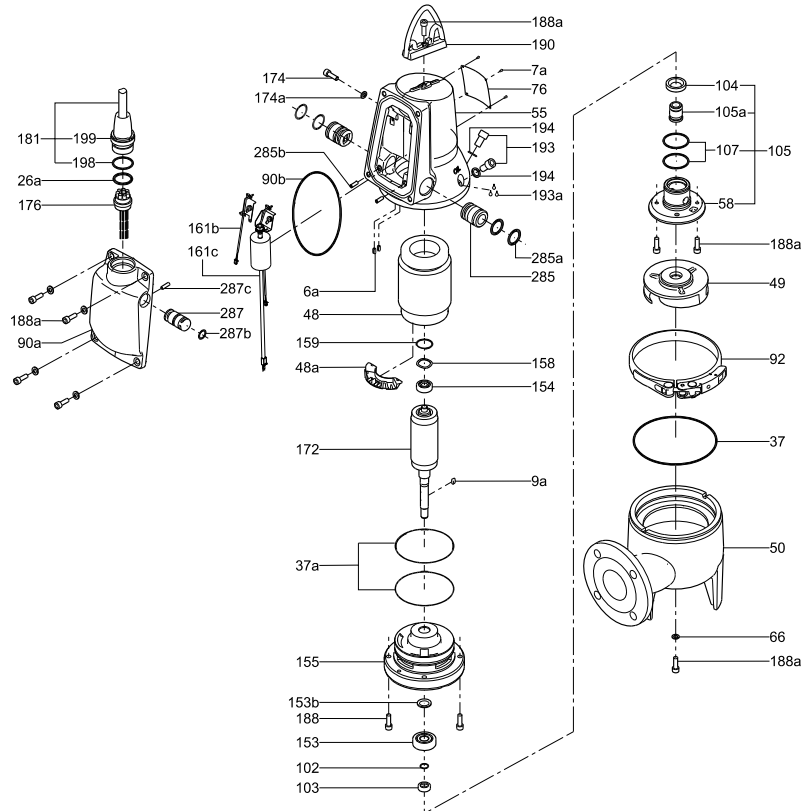
**Upper guide rail holder**

Pos.	Kit No	96829357
	Description	DN 65/DN 80
	-	Upper guide rail holder

SL1.50



SLV.65



TM04 4799 2109

TM04 4800 2109

**Cable**

Pos.	Description	Length 10		15		20		25		
		Type	Standard	Ex	Standard	Ex	Standard	Ex	Standard	Ex
181	Cable		96591649	96689976	96659473	96689977	96591660	96689978	96689953	96689979

**Dry running sensor**

Pos.	Description	Type	Standard	Ex
		Kit No	96898083	96984131
90b	O-ring 180 x 4		1	2
285	Dry-running sensor		1	1
285a	O-ring 30 x 3		2	1
285b	Set screw for sensor housing M6 x 18		1	1

**Electronic controller**

Pos.	Description	Type	Standard 1-ph.	Ex 1-ph.	Standard 3-ph.	Ex 3-ph.
		2-pole	0.9 - 1.1 kW	0.9 - 1.1 kW	0.9 - 1.5 kW	0.9 - 1.5 kW
		Kit No	96898085	96984145	96898086	96984146
90a	Cover with electronic unit		1	1	1	1
90b	O-ring 180 x 4		1	1	1	1

**Level sensor**

Pos.	Description	Type	Standard	Ex
		Kit No	96898082	96984130
90b	O-ring 180 x 4		1	1
287	Level sensor		1	1
287b	O-ring 20 x 3		1	1
287c	Set screw for sensor housing M6 x 18		1	1

**Power plug**

Pos.	Description	Type	Standard and Ex
		Kit No	96984144
90b	O-ring 180 x 4		1
181	Outer plug for power connection		1

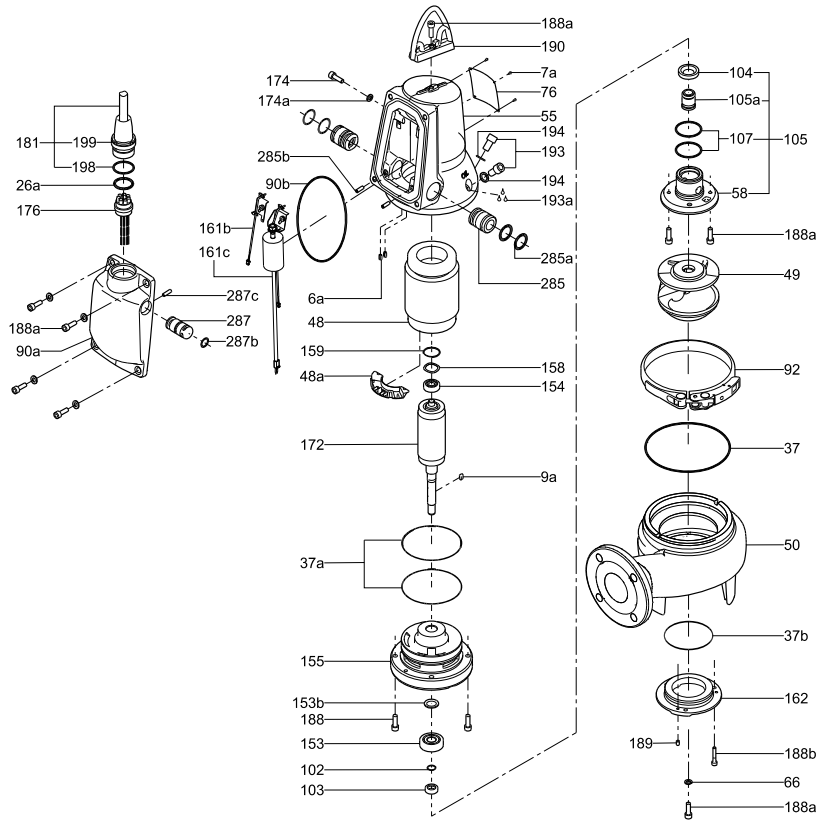
**PT1000 with bracket**

Pos.	Description	Type	Standard 3-ph. and Ex
		Kit No	97698437
161b	PT1000 sensor with bracket		1
90b	O-ring 180 x 4		1

**Run capacitor**

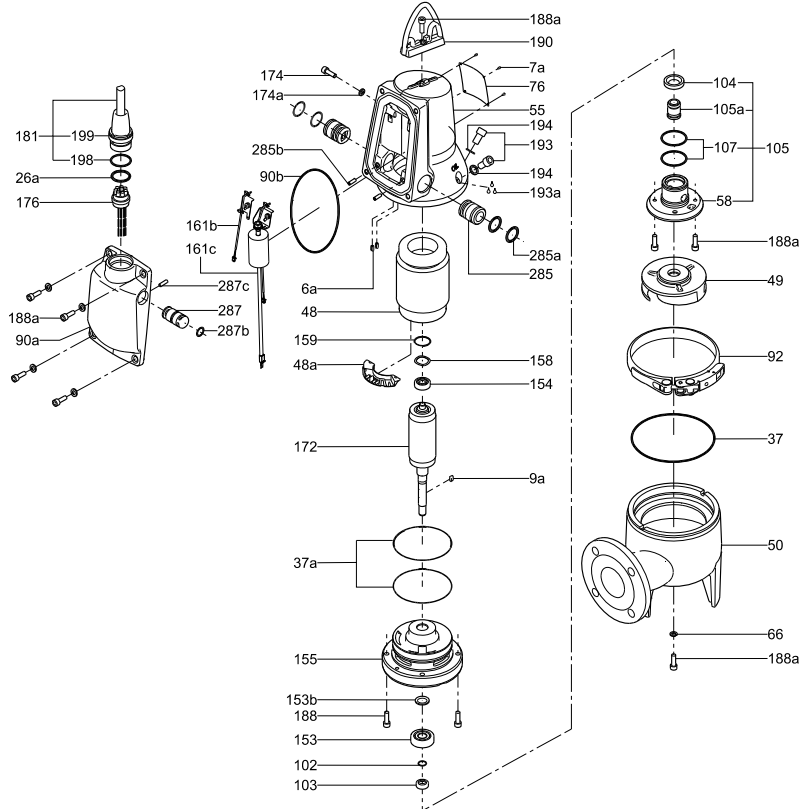
Pos.	Description	Kit No	96898084
90b	O-ring 180 x 4		1
-	Hexagon nut M8		1
161c	Bracket with capacitor		1
161d	Star washer		1
161f	Screw M5 x10		1
288	Pt1000 sensor		1
-	Cable strip		2

SL1.50



TM04 4799 2109

SLV.65



TM04 4800 2109